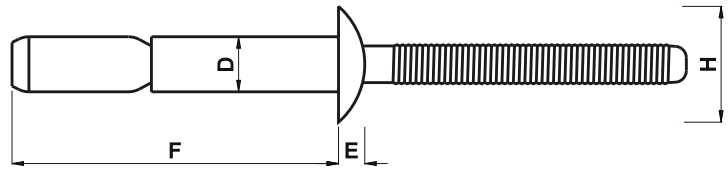




- Quarter Turn Locks
- Compression Locks & Latches
- Handle Locks
- Rod Control Locks
- Electronic Locks
- Canopy Locks, Handles & Door Stay
- Hinges
- 9 Fold Accessories
- Sealing Profiles
- Fan Filter
- Panel Fasteners
- Sleeve & Termination
- Wiring Accessories
- Connectors

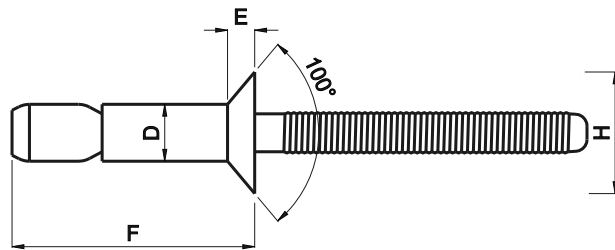
SS - CFIX SERIES - DOME HEAD



Material : Steel
Finish : Zinc Plating

D Nom.	Art Code	F Max.	Grip Range		H Max	E	Drill No. Hole Size	Shear* LBS	Tensile* LBS
			Inch	mm					
4.8 3/16"	SS-CFIX 0604	18.2	0.064" ~ 0.250"	1.63 ~ 6.86	10.1	2.29	#10 4.93 ~ 5.18	1450 6400 N	1150 5100 N
	SS-CFIX 0607	24.4	0.064" ~ 0.437"	1.63 ~ 11.10					
6.4 1/4"	SS-CFIX 0806	23.7	0.080" ~ 0.375"	2.03 ~ 9.53	13.3	2.9	G 6.6 ~ 7.0	2650 11700 N	2350 10400 N
	SS-CFIX 0810	32.9	0.080" ~ 0.625"	2.03 ~ 15.87					

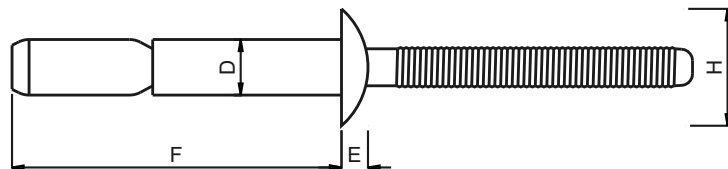
SS-CFIX SERIES - CSK HEAD



Material : Steel
Finish : Zinc Plating

D Nom.	Art Code	F Max.	Grip Range		H Max	E	Drill No. Hole Size	Shear* LBS	Tensile* LBS
			Inch	mm					
4.8 3/16"	SS-CFIX 0606C	20.2	0.125" ~ 0.331"	3.17 ~ 8.41	8.5	2.2	#10 4.93 ~ 5.18	1450 6400 N	1150 5100 N
	SS-CFIX 0608C	26.2	0.125" ~ 0.481"	3.17 ~ 12.22					
6.4 1/4"	SS-CFIX 0808C	26.3	0.125" ~ 0.475"	3.17 ~ 12.07	10.1	2.4	G 6.6 ~ 7.0	2650 11700 N	2350 10400 N

BB-CFIX SERIES - DOME HEAD



Material : Stainless Steel
Finish : Polished

D Nom.	Art.Code	F Max.	Grip Range		H Max.	E	Drill No. Hole Size	Shear LBS	Tensile LBS
			inch	mm					
4.8 3/16"	BB-CFIX 0604	18.2	.064" ~ .250"	1.63 ~ 6.86	10.1	2.29	#10 4.93 ~ 5.18	1300 5785 N	1000 4450 N
	BB-CFIX 0607	24.4	.064" ~ .437"	1.63 ~ 11.10					
6.4 1/4"	BB-CFIX 0806	23.7	.080" ~ .375"	2.03 ~ 9.53	13.3	2.9	G 6.6 ~ 7.0	2400 10675 N	1850 8230 N
	BB-CFIX 0810	32.9	.080" ~ .625"	2.03 ~ 15.87					

Shear Strength and Tensile Strength marked * are typical values