

| Specification | ZDC housing and handle | PA housing, ZDC handle |
|---------------|------------------------|------------------------|
| | Model | Model |
| GH=18 | MS705-3U-1 | MS705-3U-1F |
| GH=28 | MS705-3U-2 | MS705-3U-2F |
| GH=36 | MS705-3U-3 | MS705-3U-3F |
| GH=62 | MS705-3U-4 | MS705-3U-4F |



RL **IP65**

Main material and finish :
Black powder coated ZDC housing or black PA housing, white zinc-plated steel cam

Application :
Quarter-turn opening or closing

Quarter Turn Locks

Compression Locks & Latches

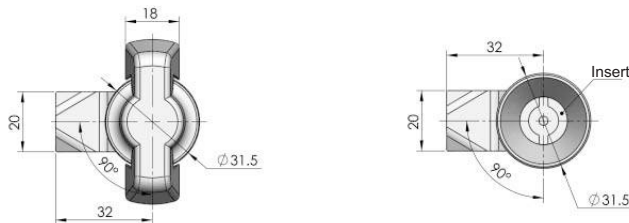
Handle Locks

Rod Control Locks

Electronic Locks

Canopy Locks, Handles & Door Stay

Hinges



MS705-K01

MS705-K02



RL

Main material and finish :
Green powder coated ZDC handle, housing and insert, white zinc plated steel cam.

Application :
Quarter-turn opening or closing

9 Fold Accessories

Sealing Profiles

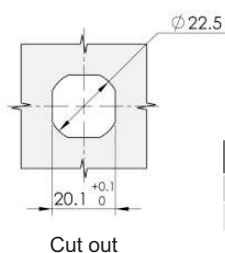
Fan Filter

Panel Fasteners

Sleeve & Termination

Wiring Accessories

Connectors



| Specification | Model |
|---------------|-----------|
| Handle | MS705-K01 |
| Double bit | MS705-K02 |