

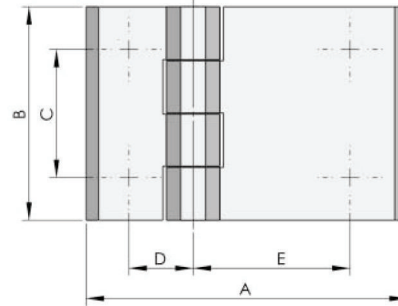
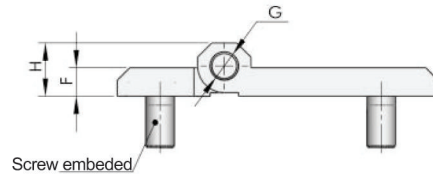


Quarter Turn Locks
Compression Locks & Latches
Handle Locks
Rod Control Locks
Electronic Locks
Canopy Locks, Handles & Door Stay
Hinges
9 Fold Accessories
Sealing Profiles
Fan Filter
Panel Fasteners
Sleeve & Termination
Wiring Accessories
Connectors



Main material and finish:
Black powder coated ZDC hinge, nickel-plated steel pin

Application:
Opening degree 180°

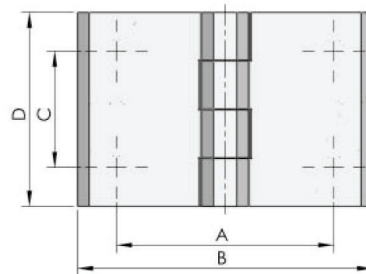
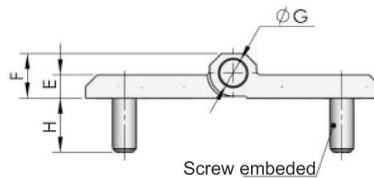


Model	Specification								Remarks
	A	B	C	D	E	F	G	H	
CL226-4-1	90	60	36	18	44	8	8	15	Ø8.4 Countersunk hole, ZDC
CL226-4A-1	90	60	36	18	44	8	8	15	M8 Screw embedded, ZDC
CL226-4-2	63	50	30	15	28	6	6	11.5	Ø6.3 Countersunk hole, stainless steel
CL226-4A-2	63	50	30	15	28	6	6	11.5	M6 Screw embedded, ZDC



Main material and finish:
Black powder coated ZDC hinge, nickel-plated steel pin

Application:
Opening angle 180°



Model	Specification								Remarks
	A	B	C	D	E	F	G	H	
CL226-7-1	56	76	30	50	6	11.5	6		Ø6.3 Countersunk hole, ZDC
CL226-7A-1	56	76	30	50	6	11.5	6	12.5	M6 Screw embedded, ZDC
CL226-7-2	88	120	36	60	8	15	8		Ø6.8 Countersunk hole, ZDC
CL226-7A-2	88	120	36	60	8	15	8	16.5	M8 Screw embedded, ZDC