



Quarter Turn Locks

Compression Locks & Latches

Handle Locks

Rod Control Locks

Electronic Locks

Canopy Locks, Handles & Door Stay

Hinges

9 Fold Accessories

Sealing Profiles

Fan Filter

Panel Fasteners

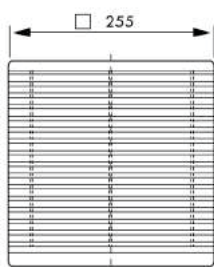
Sleeve & Termination

Wiring Accessories

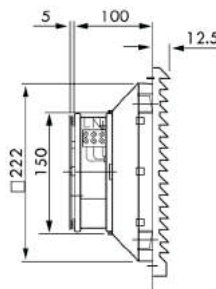
Connectors



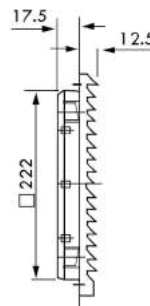
**Type of Material** : ABS  
**Standard color** : RAL 7035, RAL 7032, other colors on request  
**Protection degree** : Ip54  
**Fixing System** : Snap Fitting  
**Plate Thickness** : 1.5mm to 2.5mm  
**Storage Temperature** : from -40°C to +70°C  
**Type of Filter Media** : Thermo-Linked Progressive Structure  
**Filtering Class** : Class G3, according to En779



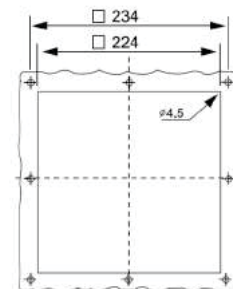
Fan and Filter APF 103



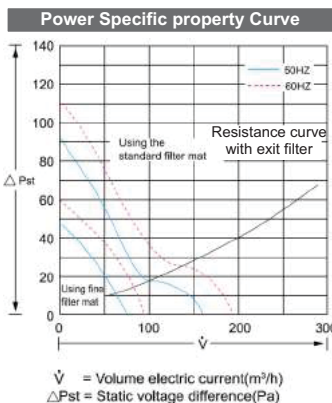
Fan and Filter APF 203-01/11



Exit Filter APF 103



Installing Section APF 103---



Fan and Filter	APF 203-01	APF 203-11
Voltage/Frequency	230/50/60	24(DC)
Air flow, Free blowing	230/265m <sup>3</sup> /h	
Air flow with Exit filter	170/205m <sup>3</sup> /h with Exit Filter	
Axial Fan	Self-start shielded pole motor	DC motor
Rotated Current	0.26A/0.21A	0.58A
Power	47W/59W	14W
Noise Level	54/56dB(A)	
Scope of Temperature	-10°C~+55°C	
Exit filter	APF - 103	
Contact us if special Voltage required		

