



CAGE NUTS

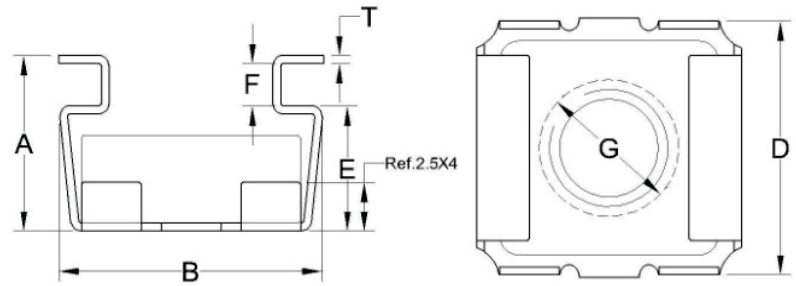


Material :

Steel/ Stainless Steel

Surface Treatment :

Zinc Plating/ Polished



NO.	M5		M6		M8	
	CN05-2T	CN05-3T	CN06-2T	CN06-3T	CN08-3T	CN08-2T
A	9.00 ±0.50	9.00 ±0.50	9.00 ±0.50	9.00 ±0.50	11.90 ±0.50	10.40 ±0.50
B	13.30 ±0.50	13.30 ±0.50	13.30 ±0.50	13.30 ±0.50	16.60 ±0.50	16.70 ±0.50
D	13.00 ±0.50	13.00 ±0.50	13.00 ±0.50	13.00 ±0.50	16.00 ±0.50	16.00 ±0.50
E	6.20 ±0.20	6.20 ±0.20	6.20 ±0.20	6.20 ±0.20	7.90 ±0.20	7.90 ±0.20
F	2.20 ±0.20	2.70 ±0.20	2.20 ±0.20	2.70 ±0.20	2.70 ±0.20	2.00 ±0.20
G	7.00 ±0.10	7.00 ±0.10	7.00 ±0.10	7.00 ±0.10	10.00 ±0.10	10.00 ±0.10
T	0.40 ±0.04	0.40 ±0.04	0.40 ±0.04	0.40 ±0.04	0.50 ±0.04	0.50 ±0.04

Quarter Turn Locks

Compression Locks & Latches

Handle Locks

Rod Control Locks

Electronic Locks

Canopy Locks, Handles & Door Stay

Hinges

9 Fold Accessories

Sealing Profiles

Fan Filter

Panel Fasteners

Sleeve & Termination

Wiring Accessories

Connectors