



**ARIHANT**  
— CREATE YOUR VALUE —

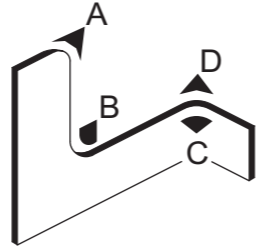


# SEALING PROFILE





**SEALING PROFILES**

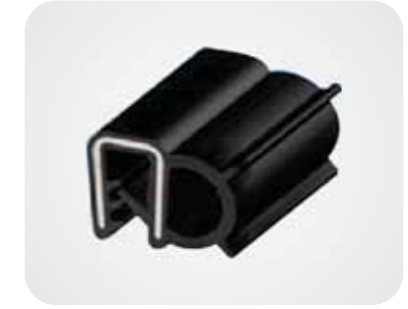
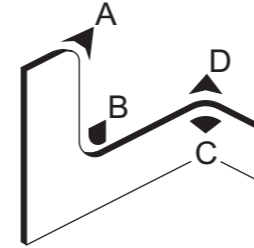


Self-gripping sealing profile with a black EPDM rubber carrier and a sealing lip and / or sealing tube from sponge-rubber. Integrated steel strip core or steel wire core.

SEALING PROFILES					
Drawing	P/N	Description	Clamping range	Bending Radius (mm)	Coil Size
	FD 0921	With steel strip core	1.0-2.0	A=50, B=60, C=20, D=20	25 Meter
	FDW 0921	With steel wire core	1.0-2.0		50 Meter
	FD 9925	With steel strip core	1.0-2.5	A=50, B=180, C=30, D=30	25 Meter
	FDW 9925	With steel wire core	1.0-2.5		50 Meter
	FD 9927	With steel strip core	1.0-3.0	A=100, B=180, C=25, D=25	25 Meter
	FD 9928	With steel strip core	1.0-2.0	A=50, B=60, C=20, D=20	25 Meter
	FDW 9930	With steel wire core	1.0-3.0	A=160, B=250, C=200, D=200	50 Meter
	FDW 9932	With steel wire core	1.0-3.0	A=50, B=200, C=25, D=25	50 Meter



**SEALING PROFILES**



Self-gripping profile with EPDM-rubber carrier and sealing lip and / or sealing tube from sponge rubber. Integrated steel strip core or steel wire core.

SEALING PROFILES					
Drawing	P/N	Description	Clamping range	Bending Radius (mm)	Coil Size
	FD 0922	With steel strip core	1.0-2.0	A=20, B=50, C=20, D=60	25 Meter
	FDW 0922	With steel wire core	1.0-2.0		50 Meter
	FD 9926	With steel strip core	1.0-2.5	A=50, B=20, C=120, D=40	25 Meter
	FDW 9926	With steel wire core	1.0-2.5		50 Meter
	FD 9931	With steel strip core	1.0-2.5	A=20, B=50, C=20, D=60	25 Meter
	FD 9933	With steel strip core	1.0-2.5	A=20, B=50, C=20, D=60	25 Meter
	FD 9934	With steel strip core	1.0-2.5	A=20, B=50, C=20, D=20	25 Meter
	FD 9935	With steel strip core	1.0-2.5	A=20, B=50, C=20, D=20	25 Meter

Quarter Turn Locks

Compression Locks & Latches

Handle Locks

Rod Control Locks

Electronic Locks

Canopy Locks, Handles & Door Stay

Hinges

9 Fold Accessories

Sealing Profiles

Fan Filter

Panel Fasteners

Sleeve & Termination

Wiring Accessories

Connectors

Quarter Turn Locks

Compression Locks & Latches

Handle Locks

Rod Control Locks

Electronic Locks

Canopy Locks, Handles & Door Stay

Hinges

9 Fold Accessories

Sealing Profiles

Fan Filter

Panel Fasteners

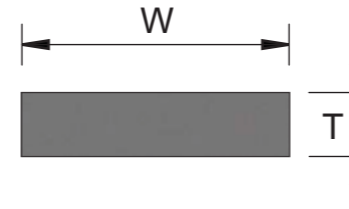
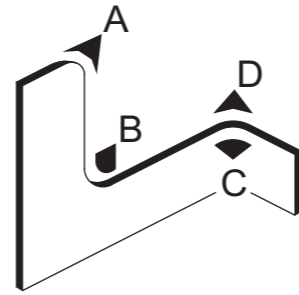
Sleeve & Termination

Wiring Accessories

Connectors



**EDGE PROTECTION PROFILES**



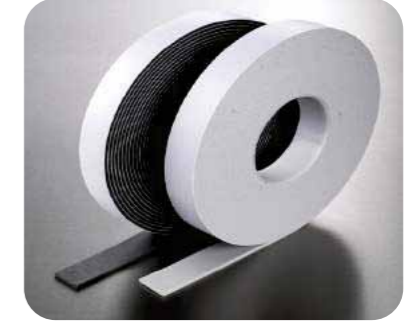
Self-gripping edge protection profile made of black PVC. Integrated steel strip core. Other colours are available on request.

**EDGE PROTECTION CLIP ON PROFILES**

Drawing	P/N	Description	Clamping range	Bending Radius (mm)	Coil Size
	APT-001	With steel strip	1.0-2.0	A=15, B=15, C=10, D=10	25 Meter
	APT-002	With steel strip	2.0-5.0	A=40, B=40, C=20, D=20	25 Meter
	APT-003	With steel strip	2.0-5.0	A=40, B=40, C=20, D=20	25 Meter
	APT-004	With steel strip	2.0-5.0	A=40, B=40, C=20, D=20	25 Meter
	APT-005	With steel strip	1.0-2.0	A=15, B=15, C=10, D=10	25 Meter
	APT-006	With steel strip	2.0-5.0	A=40, B=40, C=20, D=20	25 Meter



**SELF ADHESIVE GASKET**



Sr No.	Code	Color	W (mm)	T (mm)	Packing size
1	ASA-103	Black	10	3	10 mtr.
2	ASA-105	Black	10	5	10 mtr.
3	ASA-153	Black	15	3	10 mtr.
4	ASA-155	Black	15	5	10 mtr.
5	ASA-203	Black	20	3	10 mtr.
6	ASA-205	Black	20	5	10 mtr.
7	ASA-253	Black	25	3	10 mtr.
8	ASA-255	Black	25	5	10 mtr.
9	ASA-303	Black	30	3	10 mtr.
10	ASA-305	Black	30	5	10 mtr.

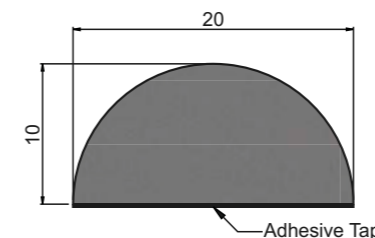
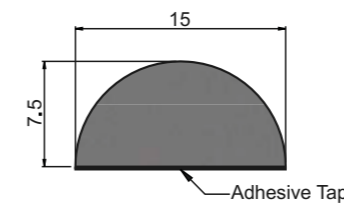
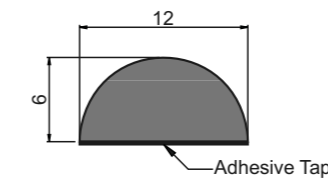
**Material:**  
XLPE, Nitrile, EPDM, Neoprene

**Adhesive:**  
Single Side or Double Side

**Note:**  
Mention Material Name after Code

**Example:** For XLPE  
ASA-103-XLPE

**D TYPE GASKET**



**Material:**  
PUR Foam

**Color:**  
Black

**Adhesive:**  
Single Side