



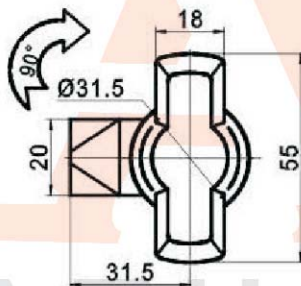
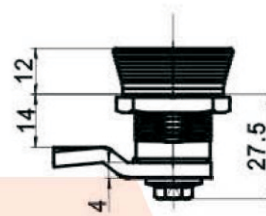
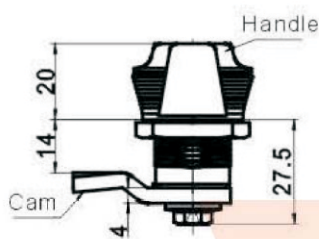
MS705-K



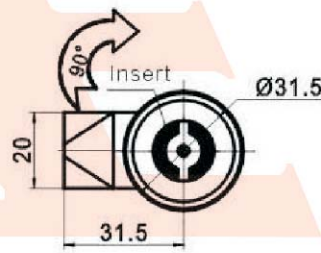
MS705-K01



MS705-K02



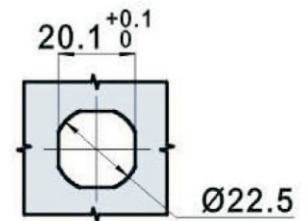
MS705-K01



MS705-K02



Hooked cam for selection, refer to MS705 comment. Ra=360°, suit to push & pull cabinet door.



Cut out

Main material and finish: Green powder coated ZDC handle, housing insert; zinc-plated steel cam.

Double bit	MS705-K02	K15, K15-1F, K15-1A
Handle	MS705-K01	
SPECIFICATION	CODE	KEY FOR SELECTING