



CL226



CL226-1



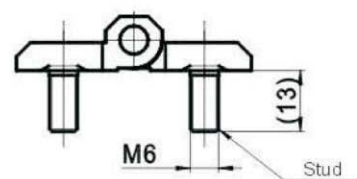
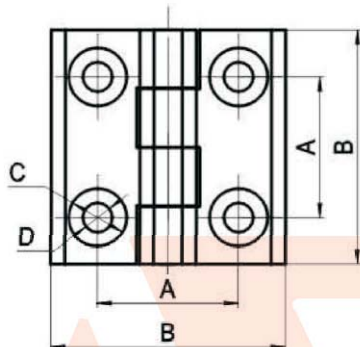
CL226-2



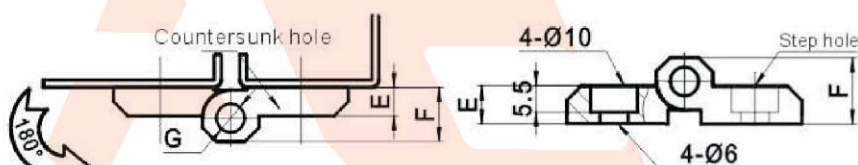
CL226-3



CL226-2A



CL226-2A (With screw)



CL226-2 C (Step hole)

ARIHANT

Main material and finish: Black powder coated ZDC hinge.

CL226-3A	25	40	10.2	5.3	5	9	4	Embed screw, ZDC
CL226-3	25	40	10.2	5.3	5	9	4	Countersunk, ZDC
CL226-2S	30	50	12.5	6.3	6	11.5	6	Countersunk, PA
CL226-2C	30	50	See drawing		8	14	6	Step hole, ZDC
CL226-2A	30	50	See drawing		6	11.5	6	Embed screw, ZDC
CL226-2	30	50	12.5	6.3	6	11.5	6	Countersunk, ZDC
CL226-1B	36	60	16.5	8.4	8	15	8	Countersunk, S.S.
CL226-1A	36	60	16.5	8.4	8	15	8	Embed screw, ZDC
CL226-1	36	60	16.5	8.4	8	15	8	Countersunk, ZDC
CODE	A	B	C	D	E	F	G	Remark
	SPECIFICATION							